

PENETANGORE  
REGIONAL  
ECONOMIC  
DEVELOPMENT  
CORPORATION

WHO WE ARE



# WHY PREDC?

- ▶ Business people engaged in applying their skills to business development
- ▶ Strengthens our capacity to compete with other jurisdictions
- ▶ Frees us from some municipal regulations and bureaucracy
- ▶ PREDC can support the municipality and vice versa
- ▶ Increased capacity to attract new investment
- ▶ More options to seek funding
- ▶ Leverage our local resources
- ▶ Focus on jobs



**PENETANGORE REGIONAL**  
ECONOMIC DEVELOPMENT CORPORATION


# PREDC VISION

That business is:

- **Confident** of its place in the community as a catalyst for economic growth.
- **Connected** to the issues and needs of the community.
- Engaged in **collaborative** initiatives and partnerships with other members of the business community, local government and civic organizations.

# PREDC MISSION

To foster a vibrant business community through:

1. Reliance on **local talent**.
  2. Support of **innovation** and entrepreneurship.
  3. **Connectivity** among business leaders.
  4. Professional and **cooperative** working relationships.
  5. Transparent and deliberate **decision-making**.
  6. Sharing and **leveraging** of local resources.
  7. **Planning** that is evidence-based, deliberate and transparent.
- 

# PREDC VALUES

Excellence

Quality of Life

Leadership

Integrity

Diversity

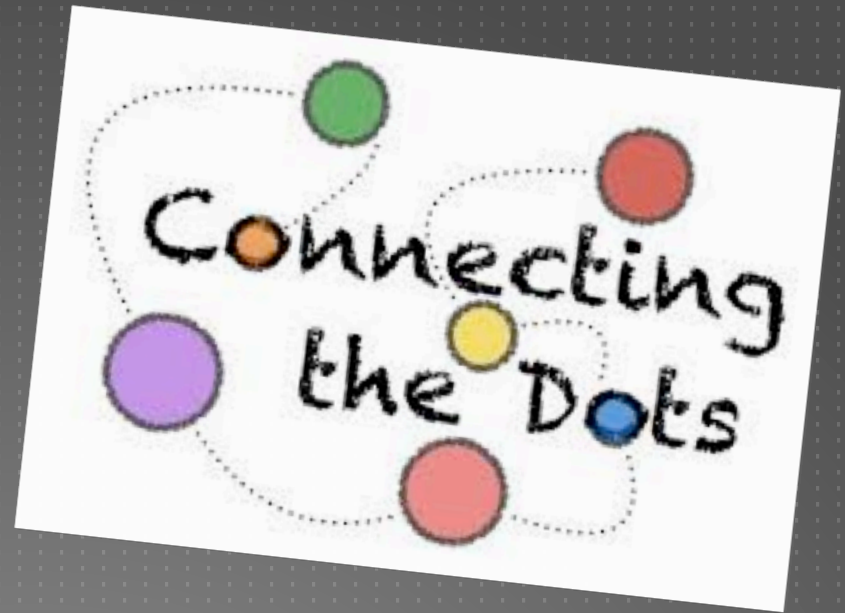
Teamwork



# PREDC BOARD MEMBERS

## SKILL SETS

- Sales
- Governance
- Team -building
- Financial planning
- Project management
- Business development
- Project feasibility assessment
- International agriculture consulting



# MENSE (JIM) PRENGER

- ▶ President of PREDC
- ▶ District Governor Lions Club
- ▶ Past President: Lion's Club . Curling Club  
Chamber of Commerce
- ▶ 38 years in banking (branch management, lending)
- ▶ Sports coach
- ▶ 12 years on municipal economic development  
committee

# ROBERT COTTRILL

- ▶ Vice-president of PREDC
- ▶ Entrepreneur: Cottrill Fuels . Cottrill Paving . Cottrill Heavy Equipment
- ▶ Walker House Restoration
- ▶ President: Cruise Night . Walker House
- ▶ 2012 citizen of the year



# LINDA BOWERS

- ▶ Secretary-Treasurer of PREDC
- ▶ Real Estate Broker
- ▶ REALTORS' Association Board of Directors
- ▶ RAGBOS Political Action Affairs member
- ▶ Past President Chamber of Commerce
- ▶ Past member - municipal economic development committee
- ▶ Supporter – Scottish Festival, Kincardine Ag Society Ambassador Programme, Kinetic Knights, Grey Bruce Crime Stoppers & Bluewater Summer Playhouse
- ▶ Former Project Manager South Dundas Economic Development Commission

# ALLAN RIBBINK

- ▶ Knowledge of local economy, business development and export marketing
- ▶ Sheep Farmer (1000 breeder . 2000 feeder)
- ▶ Consults internationally (North & South America; Middle East; Isle of Mann)
- ▶ Ontario Sheep and Services Committee
- ▶ Board of Directors: Bruce County Federation of Agriculture & Bruce Botanical Food Gardens
- ▶ Past member - municipal economic development committee

# GUY ANDERSON

- ▶ Entrepreneur: carpentry; contracting; restaurant; sporting goods
- ▶ Bee keeper (1300 bee hives)
- ▶ Director Ontario Beekeepers Association
- ▶ 13 years on economic development committee
- ▶ Former Chief Building Official
- ▶ Former Councillor Ward 1 and at Large
- ▶ Past Chair Grey/Bruce Culinary Association

# DON JONES

- ▶ 30 years experience in nuclear and agriculture industries
  - ▶ Development of safe nuclear systems
  - ▶ OPG Senior Management
  - ▶ Project Management
  - ▶ Agriculture equipment designer
  - ▶ John Deere Sales Rep
- 